

THE CHILLING REALITY OF COLD BOOT ATTACKS

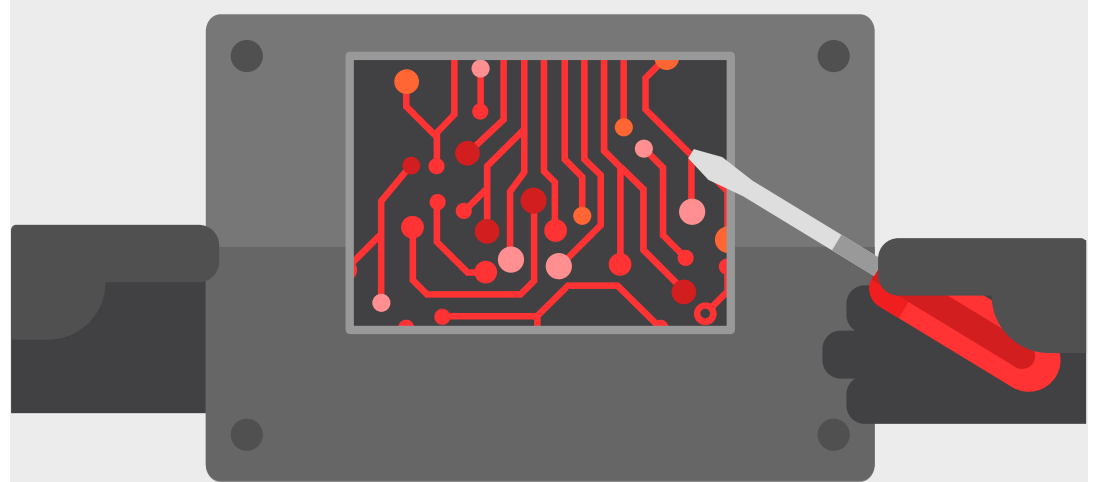
Cold boot attacks can steal encryption keys from nearly any laptop

1.



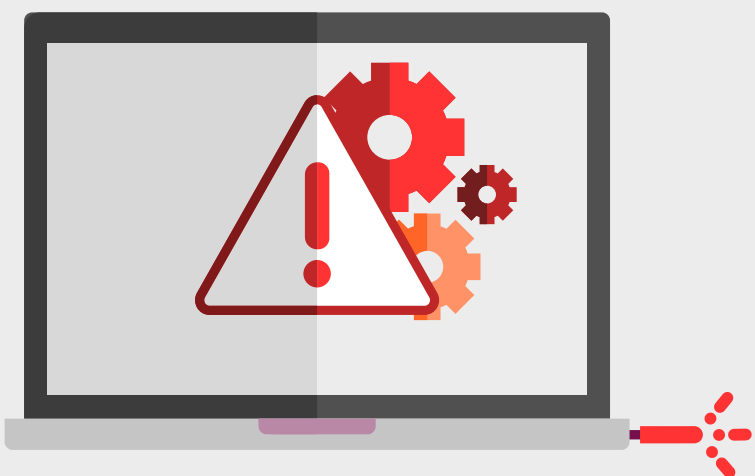
Attacker gets physical access to a company laptop

2.



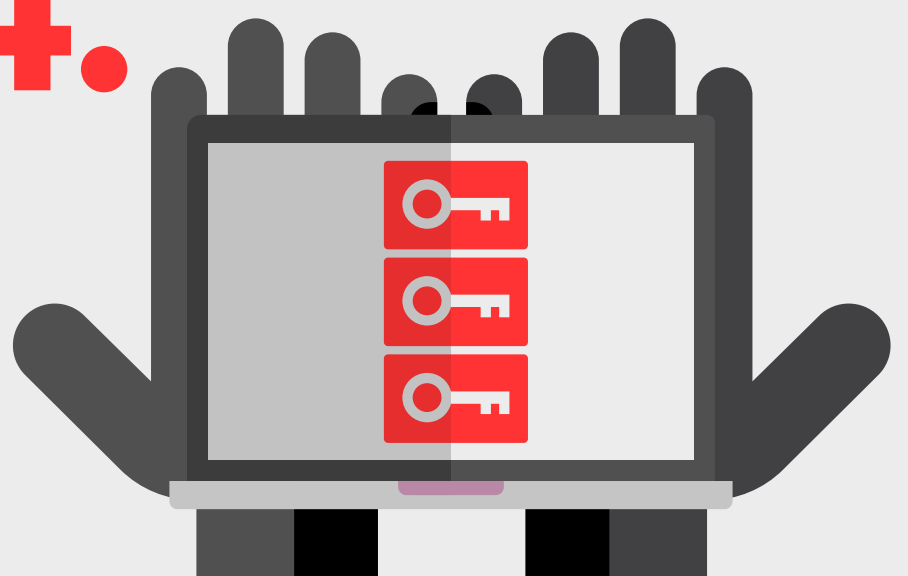
Attacker manipulates firmware settings

3.



Attacker performs cold reboot into USB key

4.



Attacker gets encryption keys from memory

Security experts advise companies to BE PREPARED

Require Bitlocker PIN entry on computer restore/power up

Force computers to shut down/hibernate

Keep laptops physically safe and report missing devices

Have an incident response plan to deal with missing devices